



COURT HOUSE

In the earliest days of our County's history, the courts met in private homes. In July, 1818 at Palmyra, the county seat, a court house was planned. It was to be a framed house, 38 by 44 feet in area and 20 feet high at the eaves. Weatherboards were to be of poplar and the roof of "sound shingles." It was to have a balcony with dimensions of 8 by 8 by 12 feet. A steeple 23 feet high was to be atop the building.

The county seat was moved to Albion in 1821 and the first court sessions in Albion were held in the Market House on the public square until a courthouse could be erected. To secure the county seat, the town proprietors had agreed to furnish twenty acres of ground for county use, 70,000 brick, 20,000 feet of plank, 20,000 feet of scantlings, 20,000 shingles, and \$500.00 worth of hand and team labor.

On 9 July 1823 a contract was entered into with John Robinson and William Wilson to build a one-story building 26 feet by 30 feet for \$1,800. On 24 August 1824 this contract was changed to a two-story brick building 50 feet by 30 feet at least 20 feet high with a cupola enclosed with venetian blinds. A debtor's prison was to be on the second floor as was the courtroom, each equipped with a fireplace. This building was erected in the southwest part of the public square and was to be completed by May, 1825 at a cost of \$3,000. This first courthouse was built mostly by subscription (mainly by the town proprietors) with some help from the county. It had a carved wooden Indian as finial on top of the dome. The September, 1826 court ordered that the circuit court be held in the new courthouse.

A contract was let to Elias Weaver on 3 March 1852 for \$3,600 for the purpose of constructing a new courthouse. The

building was to be a two-story brick structure with stone foundation, two stories high, and forty feet square. Walls of the first floor were to be twelve feet high and eighteen inches thick. The second floor was to be ten feet high with thirteen inch walls. There were to be eight windows downstairs with green venetian shutters and a large front door in the south wall with sidelights, and having a fan-light above it. Upstairs there were ten windows, each with green venetian shutters. The old courthouse was sold to General William Pickering who was given nine months to remove the old building. Bricks were cleaned and used to build the Hall House on north Sixth Street, the present residence of Roy Luthé.

In 1887 an attempt to build a new courthouse failed. After much wrangling and a threat to move the county seat to Browns, it was agreed that the courthouse be remodeled. McDonald Brothers, architects of Louisville, Kentucky, submitted plans for the "repair" work. The contract was let to Joseph Harris and Sons for \$8,345. The county offices were moved to the second floor of the old Opera House and the courthouse was completely razed except for a portion of the old wall on the west and a small section on the south.

The village of Albion purchased the clock and donated it to the county which in turn added the tower to house the clock. In July, 1911 the courthouse was wired for electricity. A separate water and sewage system was installed before the City of Albion Waterworks was installed.

On 27 June 1940 an appropriation was approved by the WPA for a \$32,000 addition to the courthouse. The WPA was to furnish \$19,551 and the county about \$12,000. This was the east addition of the present courthouse.

COUNTY GOVERNMENT

The governing body of Edwards County has changed forms several times during its history. From 1815 to 1819 the body was known as the Judges' Court. From 1819 to 1849 the elected officials were known as County Commissioners. In the fall of 1849, the name of the county governing body was changed, and until 1873, was known as the County Court, having a President Judge and two Associate Justices. In 1873 the elected officials again became known as County Commissioners, which term is still used today for the three man board.

From 1873 through 1976 one County Commissioner was elected each year, serving for three years each. The Commissioner elected in 1976, Harold J. Bunting, was elected for four years in order to implement a new law. The new law provides that the County Commissioners will be elected in the existing even-numbered election years. Thus, two were elected in 1978 to serve four years until 1982, one will be elected in 1980 to serve four years, two will be elected in 1982 to serve four years, and so on.

From 1815 through 1882 the various governing bodies are listed here as a group for the period of time they served together. During this period, one or more of them may have been re-elected to the same office. Then from 1880 through 1976 the various officials are listed individually with the period each served.

JUDGES

- 1815-1817 John McIntosh, Seth Gard, William Barney
 1817- John McIntosh, William Barney, Robert Frazier
 1817-1818 William Barney, Samuel Marshall

JUSTICES

- 1818-1819 Gervase Hazleton, Joseph Baird, Ransom Higgins, William Smith, John Grayson, Samuel Newell, James Martin

COUNTY COMMISSIONERS

- 1819-1820 John Armstrong, Robert Frazer, John Higgins
 1820-1821 John Higgins, Henry Utter, William Clark
 1821-1822 Henry Utter, George May
 1822-1824 Cyrus Danforth, Samuel Munday, Ephraim Phar
 1824-1825 Elias Jordan, James Hunt, Moses Bedell
 1825-1826 James Hunt, Joel Churchill, Alan Emmerson
 1826-1828 James Hunt, Alan Emmerson, Charles Stennett
 1828-1830 James Hunt, James Hean, Charles Stennett
 1830-1832 James Hunt, Alan Emmerson, Charles Stennett
 1832-1838 James Hunt, Charles Stennett, Thomas Carney
 1838-1840 James Hunt, Leonard C. Bond, John Tribe
 1840-1842 Leonard C. Bond, John Tribe, J. W. Stevenson
 1842-1849 J. W. Stevenson, John Tribe, Britain Walser
 1849-1850 Alan Emmerson, J. W. Stevenson, Matthew Rice

COUNTY COURT — President Judge and two Associate Justices.

- 1850-1853 Alan Emmerson, judge; Matthew Rice, James Hunt, associate justices.
 1853-1857 Alan Emmerson, judge; Matthew Rice, Jonathan Shelby, associate justices.
 1857-1861 Alan Emmerson, judge; Jonathan Shelby, Britain Walser, associate justices.
 1861-1865 Samuel R. Hall, judge; Jacob Cramer, Sanford Emmerson, associate justices.
 1865-1869 Samuel R. Hall, judge; Andrew Huffman, Daniel P. Hunter, associate justices.
 1869-1872 Samuel R. Hall, judge; Andrew Huffman, Edward Handley, associate justices.
 1872-1873 Samuel R. Hall, judge; Andrew Huffman and Alfred Brown, associate justices.

COUNTY COMMISSIONERS

- 1873-1878 Josiah Dawes, chairman; Andrew Huffman, Alfred Brown.
 1878-1880 Josiah Dawes, chairman; Alfred Brown, Francis Greathouse.
 1880-1881 Josiah Dawes, chairman; Francis Greathouse, Compton Woodham.
 1881-1882 Josiah Dawes, Compton Woodham, Charles Walser

Going back to 1880 and repeating the last two elected County Commissioners listed above, the County Commissioners elected from 1880 through 1978 are listed below with their terms of office:

WOODHAM, Compton	1880-1886
WALSER, Charles	1881-1884
CLARK, Charles	1882-1885
BALDING, Jacob	1884-1887
SHEMELEY, Benjamin M.	1885-1888
SMITH, Thomas J.	1886-1889
GAMPER, Edwin	1887-1890
MAY, George Sr.	1888-1894
GLOVER, Thomas F.	1889-1895
BIRKETT, John C.	1890-1896
Longbonds, Benjamin	1894-1897
BEEHN, Fred Sr.	1895-1898
COLYER, Morris	1896-1899
GOULD, Ira	1897-1900
FIEBER, Frank	1898-1901
McKIBBEN, William H.	1899-1904*
GATES, John H.	1900-1903
CURTIS, Richard A.	1901-1904
BIRKETT, John C.	1903-1908*
CLARK, John H.	1904-1907
MITCHELL, Thomas B.	**1904-1911
CURTIS, Richard A.	1907-1910
GATES, John H.	**1908-1915
GLOVER, James F.	1910-1916*
STANHOPE, Arch	1911-1917
REID, Leigh L.	1915-1921
LIBKIE, Albert J.	1916-1922
SMITH, Thomas J.	**Apr-Nov 1916
JACOBS, Thomas J.	1917-1923
SHAW, Albert	1921-1924
JACK, Ralph	1922-1928
JOHNSON, James L.	1923-1926*
NAYLOR, Charles	1924-1926*
MITCHELL, Thomas B. Sr.	**May 1926-1931
SCHONERT, Fred	1926-1930
HALLAM, Charlie R.	1926-1932
LIBKIE, Albert J.	1930-1942
BAILEY, Fred	1931-1934
BUTLER, Amzi	1932-1938
SHUPE, Frank	1934-1943
HORTON, Philip	1938-1944
RECKLING, John H.	1942-1951
EVANS, O. R.	1943-1949
GLOVER, Lincoln	1944-1950
SHUPE, Frank	1949-1952
SCHROEDER, Elsdon F.	1950-1956
BLOOD, S. Lynn	1951-1954
MITCHELL, Thomas B.	1952-1958
GENTZ, Gilbert S.	1954-1957
WARMOTH, William J.	1956-1962
GREEN, Gilbert	1957-1963
COLLINS, Lawrence	1958-1964
FISHEL, Walter E.	1962-1971
JACOBS, Virgil	1963-1972
HORTIN, Elmer	1964-1973
BYRAM, Russell	1971-1974
POLLARD, Lloyd	1972-1978
BUNTING, Harold J.	1973-1980
MEWES, Kenneth	1974-1982
MICHELS, Vernon C.	1978-1982
HORTIN, Elmer	1980-1984

* Did not complete full term.

** Filled vacancy for remainder of term of person previously elected.

SHERIFF

ARMSTRONG, Abner	1815-1820
MILLS, Henry I.	1820-1826
JORDAN, James	1826-1830
HUNT, Thomas	1830-1832
BOWMAN, Henry	1832-1838
CARTER, James	1838-1842
KENNER, R.	1842-1848
EMMERSON, Jesse	1848-1850
KENNER, James	1850-1852
WOODS, William	1852-1858
MONTGOMERY, William A.	1858-1860
MICHELS, George	1860-1862

RONALDS, Harold E.
 MOSS, Harry C.
 MOTER, Dr. Ross L.
 McCORMACK, J. L.
 BOSTON, Dr. Andrew J.
 MOTER, Dr. Ross L.
 STROUP, Earle S.
 REID, Donald E.
 HALLAM, Lyman
 SALISBURY, Dr. Charles P.
 MICHELS, Allen E.
 GUBBINS, David R.
 CURTIS, Mark S.

**Sep 1901-1904
 1904-1916
 1916-1923*
 ** Sep 1923-1932
 1932-1936
 1936-1950*
 ** Mar 1950-1954*
 ** Oct 1954-1959*
 ** May 1959-1964
 1964-1966*
 **Apr 1966-1976
 1976-1980
 1980-1984

* Did not complete term of office.
 ** Filled vacancy for remainder of term of person elected or appointed previously.

SCHOOL COMMISSIONERS AND COUNTY SUPERINTENDENTS

BOWMAN, Henry (Died soon after appointment) 1838
 MILLS, Henry I. 1838-1842
 HEAN, James 1842-1851
 RICE, Cyrus 1851-1861
 BRANDON, Edgar W. 1861-1865
 At this point, the title of the office changes from School Commissioner to County Superintendent of Schools.
 RUDE, Lathrop T. 1865-1869
 HARRIS, Levinus 1869-1886
 FITCH, Edward C. 1886-1890
 POTTER, Frederick W. 1890-1898
 COLES, Frank Jr. 1898-1906
 SIEFFERMAN, William 1906-1914
 BALDING, Grant 1914-1922
 SIEFFERMAN, William 1922-1930
 RING, Robert M. 1930-1943
 JUDGE, Virgil H. 1943-1953
 LUTHE, Roy M. 1953-1963
 GILLETTE, Chester O. 1963-1971
 HARRIS, Leroy L. 1971-1976
 WALKER, Donald 1976-

SURVEYOR

BAIRD, Robert — Appointed and served several years.
 In 1839, the County Surveyor became an elective office and appears to have been discontinued sometime after the election of Leonard C. Brown in 1908. The County Surveyors have been:
 SPRING, Sidney 1839-1843
 BIRKETT, Thomas R. 1843-1858
 PHILLIPS, Joseph 1859-1861
 BIRKETT, Thomas R. 1861-1867
 EBERMAN, Francis W. 1867-1869
 BIRKETT, Thomas R. 1869-1879
 CHALCRAFT, Edwin L. 1879-1882
 BROWN, Joel 1884-1908
 BROWN, Leonard C. 1908-1912

COUNTY JUDGE

The County Court was implemented with the Constitution of 1848, which also created the office of County Judge. From the records on file it appears that no regular record was kept of the proceedings of the Probate Court until 1831, when Walter L. Mayo was presiding. He served as judge of probate matters until 1849, when the new office of County Judge was begun. The County Judges have been:
 EMMERSON, Alan 1849-1861
 HALL, Samuel R. 1861-1873
 CAMPBELL, Joseph M. 1873-1886
 WHITE, Joseph 1886-1890
 McGREGOR, William 1890-1902
 IBBOTSON, Isaac W. 1902-1910
 WALTERS, Peter C. 1910-1918
 FITCH, Joel Churchill 1918-1929*
 **Nov 1929-1934
 MACAULAY, David A. 1934-1941
 **Nov 1941-1950
 FUNKHOUSER, J. R. 1950-1954
 BASSETT, Arch
 FUNKHOUSER, J. R.

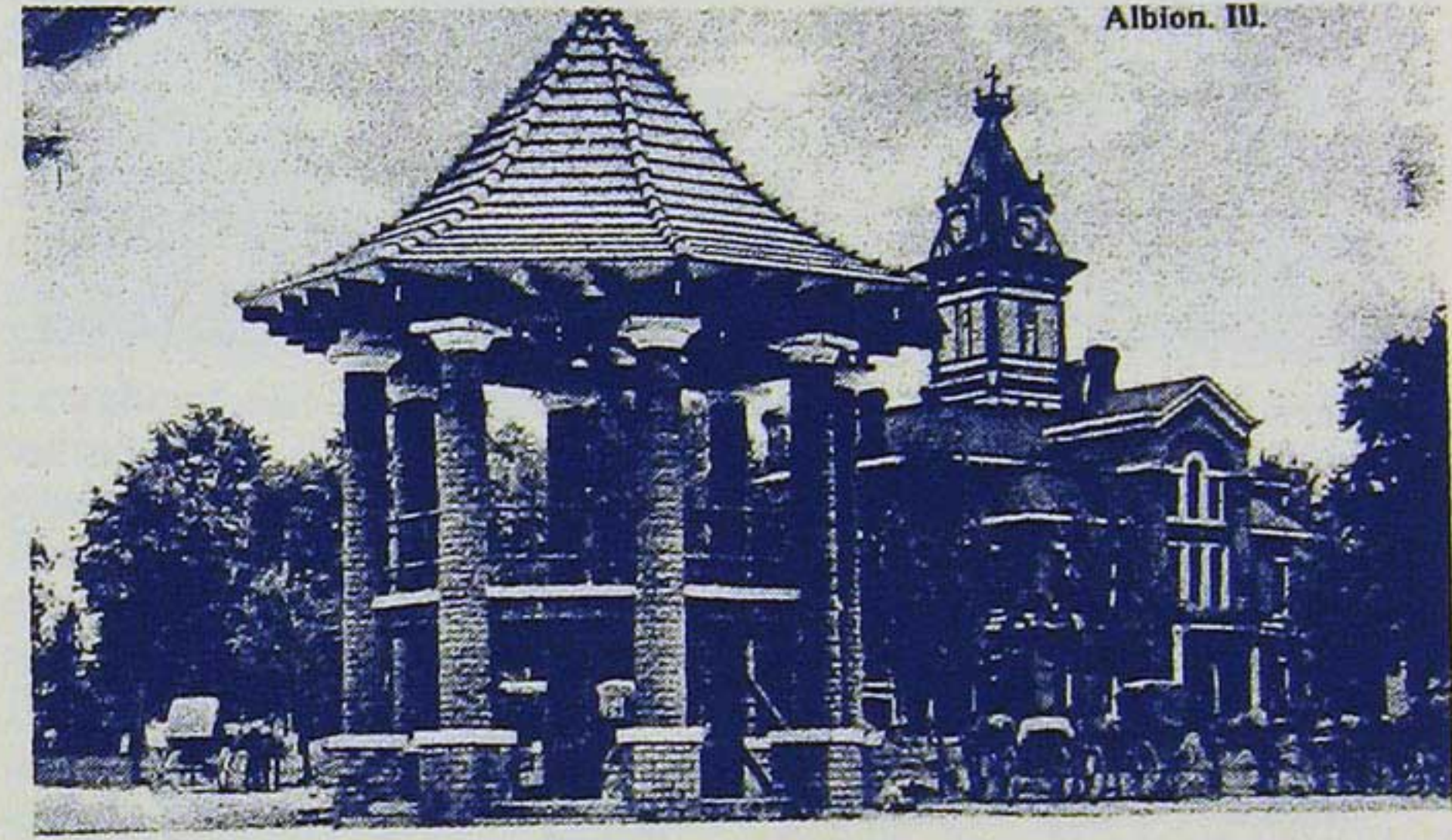
WAITE, Paul G. 1954-1958
 BUNTING, Dean 1958-1962
 KEENER, George W. 1962-1966
 SAXE, W. Bruce 1966-

* Did not complete term of office.
 ** Filled vacancy for remainder of term of person elected previously.

STATES ATTORNEY

MATHEWS, Amos B. 1876-1882*
 STRAWN, Halbert J. **1882-1896
 FITCH, Joel Churchill 1896-1904
 MACAULAY, David A. 1904-1908
 QUINDRY, S. E. 1908-1912
 SCHROEDER, Edward A. 1912-1916
 WALKER, Allen E. 1916-1924*
 **May 1924-1932*
 **Mar 1932-1940
 1940-1944*
 **May 1944-1948
 1948-1952
 1952-1956
 1956-1966*
 **1966-1972
 1972-1976
 1976-1984

* Did not complete term of office.
 ** Filled vacancy for remainder of term of person elected previously.



1914 picture of Pagoda in Albion.

PAGODAS AND BAND STANDS

In 1889, a well was dug at the southwest corner of the court house square. The water in the well was cool, mild, and very agreeable to the taste of those accustomed to it. Many people who drank from the well began to experience relief from their body ills. Many people were cured of their rheumatism, kidney, and urinary troubles, derangements of the stomach, bowels, and many other afflictions by the use of the water. When it was taken before meals it acted as a cathartic, and when taken after meals it was one of the best known remedies for indigestion. The cures were not confined to home town people only; people from neighboring towns came to drink the water and great quantities were shipped upon ordering it. In the evenings during the warm weather crowds frequented the well.

A neat pagoda was built about 1890 over the popular (mineral) well. The first pagoda was a simple wooden structure built in a square with a hipped roof, eight supporting posts, with open sides. Arches were formed by lattice work on the open sides.

The second pagoda was built circa 1906 in the same location as the first and built on the order of the first pagoda. Only this was a two-story structure with an outside stairwell located on the east side, providing entrance to the upper berth or story. Arches were formed by the lattice work on the open sides on the upper story with the lower half of the upper story being boxed in for the safety of people, so they wouldn't fall.

A HISTORY OF
EDWARDS COUNTY, ILLINOIS
VOLUME ONE
1980

“The lost cannot be recovered; but let us save what remains; not by vault and locks which fence them from the public eye and use, in consigning them to the waste of time, but by such a multiplication of copies as shall place them beyond the reach of accident.”

Thomas Jefferson